

# ESSENTIAL HARNESS

PART CODE: **H101RB**



**HEIGHT SAFETY**

## PRODUCT FEATURES >

- Pebble Weave Webbing design provides maximum grip for buckles, eliminating webbing slippage and the need for continual re-adjustment
- High Tenacity UV stabilised webbing, enhances resistance to solvents and UV light degradation
- Retro-Reflective Thread in webbing for improved visibility in low light
- Large Dorsal D Ring for easier connection
- Closed Loop Webbing system on rear Dorsal D maintains positioning of Dorsal D in the event of a fall. Significantly reducing the risk of injury from hardware hitting the back of workers head
- Extended Belay Loops make connection of hardware easier, also maintains absolute front and centre positioning as per AS/NZS requirements
- Sub Pelvic Strap integration along the line of Belay Loops, places the worker away from hardware in the event of a fall, significantly reducing the risk of injury from hardware hitting the worker
- Articulated Chest Strap and shoulder adjustment points, designed for additional user comfort and female users, due to lower positioning of strap
- Integrated webbing belt C/w rear connection dee ring at waist. (To be used for Restraint Purpose only )
- Service Pouch on back

## APPLICATIONS >

Fall Arrest, Construction, Ladder, Scaffolding, Warehouse. Highway Cone Trucks, Stock Pickers, Scissor Lifts for Restraint Purpose.

## STANDARDS >

**EXCEEDS**



Australian Standard  
AS/NZS 1891.1:2007  
Lic: 21481  
SAI Global



AS/NZS 1891.1:2007  
BMP 713822  
BMP 713823  
Australian Standard



Reading of LINQ instruction manual prior to use is mandatory. Description and specification subject to change without notice.

AUS: 1300 546 747

NZ: 0800 546 747

INTERNATIONAL: +61 1300 546 747

WWW.LINQHS.COM

# ESSENTIAL HARNESS

PART CODE: **H101RB**



**HEIGHT  
SAFETY**

## PRODUCT DETAILS >

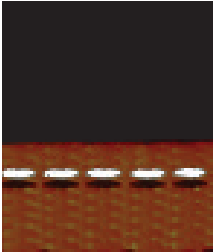
- AUS/NZ designed and engineered
- Size ranges available- Small, Standard ( M-L ) and Maxi ( XL-2XL )
- 10 year life span from date of manufacture



**DORSAL  
D RING**



**BUCKLE  
CONNECTORS**



**RETRO  
REFLECTIVE  
THREAD**



## TECHNICAL INFORMATION >

- **Webbing Material:** Polyester; 45mm; UV Resilient
- **Buckle Material:** Corrosion resistant electrophoresis; high tensile lightweight alloy steel
- **Fall Arrest Hardware:** Drop Forged corrosion resistant electrophoresis; high strength alloy steel
- **Thread:** Polyester; 9.81 Newtons (10kg); Extension at break 19.5%
- **Stitch Pattern:** THETA Pattern combines 313 stitches to exceed 28kN of strength; AS/NZ compliant colour contrast.
- **Plastic Material:** UV stabilised high density polyethylene.
- **Weight:** 1.1kg
- **Web Tenacity:** Range: Min 28kN - Max 30kN.
- **Drop Forged D Rings:** Alloy Steel (standard): 40kN
- **Buckle Strength:** 12 to 17kN model dependent; Laser etched or hard marked on buckle.



Reading of LINQ instruction manual prior to use is mandatory. Description and specification subject to change without notice.

AUS: 1300 546 747

NZ: 0800 546 747

INTERNATIONAL: +61 1300 546 747

WWW.LINQHS.COM